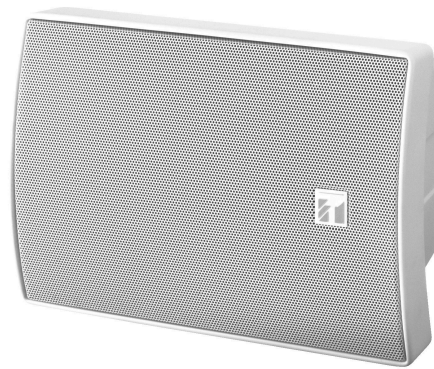


BS-1030W

COMPACT SPEAKER (WHT)

The BS-1030W is a small, 2-way bass-reflex type speaker featuring a wide frequency range suitable for use for announcements and music playback. The BS-1030W can be used for both high-impedance and low-impedance applications. The speaker's splash-proof construction permits it to be installed under the eaves where the speaker is not directly exposed to rain.



Article number: BS-1030W
Alternative products: BS-1030B, BS-1030V

Specifications

Sensitivity (1#V, 1#m)	90 dB
Frequency response	80 Hz - 20 kHz
Rated input (high impedance)	30 W
Tappings	100 V line: 330 Ω (30 W) / 500 Ω (20 W) / 670 Ω (15 W) / 1 kΩ (10 W) / 2 kΩ (5 W) 70 V line: 170 Ω (30 W) / 250 Ω (20 W) / 330 Ω (15 W) / 500 Ω (10 W) / 1 kΩ (5 W)
Rated impedance	8 Ω
Speaker component	12 cm dynamic cone-type speaker, 2.5 cm balanced dome tweeter
Finish	ABS resin, paint, off-white (RAL 9010 or equivalent),
Operating temperature	-10°C to +50°C

BS-1030W

COMPACT SPEAKER (WHT)

Appearance

