

Indoor Specialist Activation Devices Single Pole Keyswitch Devices



> Product Overview

KAC's new enhanced range of single pole keyswitch devices provides switching solutions for a broad range of applications. These include fire, security, smoke vent, extinguishant systems and many other specialist applications.



> Product Benefits

Faster installation

- Simple cable access
- Surface mount for all applications

Reduced full life costs

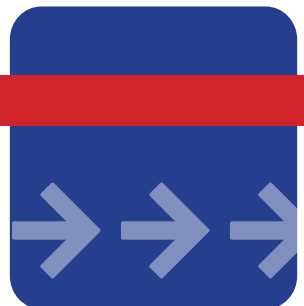
- Rigorously tested, robust and long-life key and barrel
- Tamper resistant front
- Locknut & washer/keyway feature on barrel to prevent barrel rotating from rear
- Broad temperature tolerance

Flexible installation

- 2-position and 3-position keyswitches
- Key trapped in one position or removable in all positions
- Wide range of function markings
- Available in red and a variety of other colours subject to volumes - green, white, yellow, blue and orange

Excellent system performance

- KAC's world renowned high reliability and quality
- 3-year warranty



> Applications



KAC

SP-KEY
Rev. No. 3

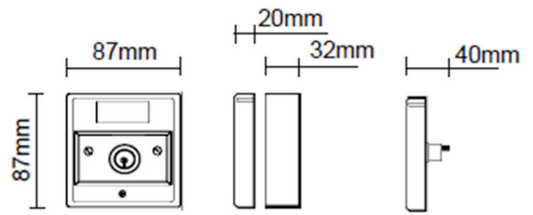
Technical Overview

The robust switching device comprises a main housing and escutcheon plate. It is fitted to the plate which simply snaps into the main housing and is permanently located in place with fixing screws. All keyswitches are supplied with 2 sturdy keys.

Electrical Specification

Maximum Voltage range: 250VAC @50HZ
 Current rating: 2 Amps @250 VAC
 4 Amps @125VAC

Dimensions



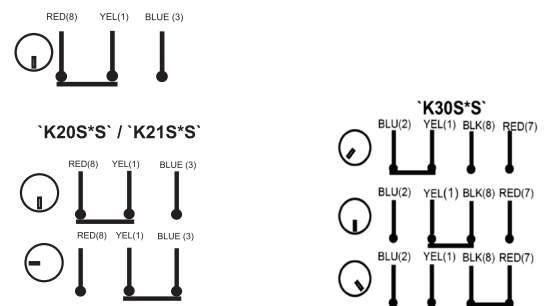
Environmental Specification

Operating Temp: -20°C to 55°C
 Ingress Protection: IP24

Approvals

For RoHS, WEEE & REACH Please visit www.kac.co.uk

Wiring Diagrams



Mechanical Specification

Colour: Red (other colours available subject to volume)
 Weight (in pack box): 166g
 Material: ABS

Ordering Information

AC has developed a product name/code structure which is as short and intuitive as possible, while incorporating meaning and logic.

Device	Key	Key Position	Key Trapped/Removable	Single/Double Pole	Colour	Surface/Flush	Function Marking Examples	Example
2-position switch – key removable in all positions, single pole, red, surface mount	K						-01 = House Flame	K20SRS-01
2-position switch – key removable in ONE position, single pole, yellow, surface mount	K	2 = 2 pos 3 = 3 pos	0 = removable in all positions	S = Single Pole	Check available colours.	S = surface	-11 = Plain – no function marking	K21SYS-11
3-position switch – key removable in all positions, single pole, orange, surface mount	K	7 = 3 pos-6500RTS	1 = trapped in position ONE				-11 = Plain – no function marking	K30SAS-11
3-position 6500RTS switch – key removable in 1 position, single pole, white, surface mount	K						-11 = Plain – no function marking	K71SWS-11

Markings Available:

Please contact Customer Service for markings available –
 Tel: +44 (0)1527 406688 or sales@kac.co.uk

Accessories:

Escutcheon Plates
 C 787 Spare Key (2 position)
 C 788 Spare Key (3 position)
 PS200 Hinged Cover
 P 056 Hinged Cover Seals
 MUS04IW Red Surface Mounting Box (other colours available)

> KAC Alarm Company Ltd

KAC House, Thornhill Road,
 North Moons Moat, Redditch,
 B98 9ND, United Kingdom
 Tel: +44 (0) 1527 406655
 Fax: +44 (0) 1527 406677
 e-mail: marketing@kac.co.uk



SP-KEY
 Rev.No.3
 July 2019