

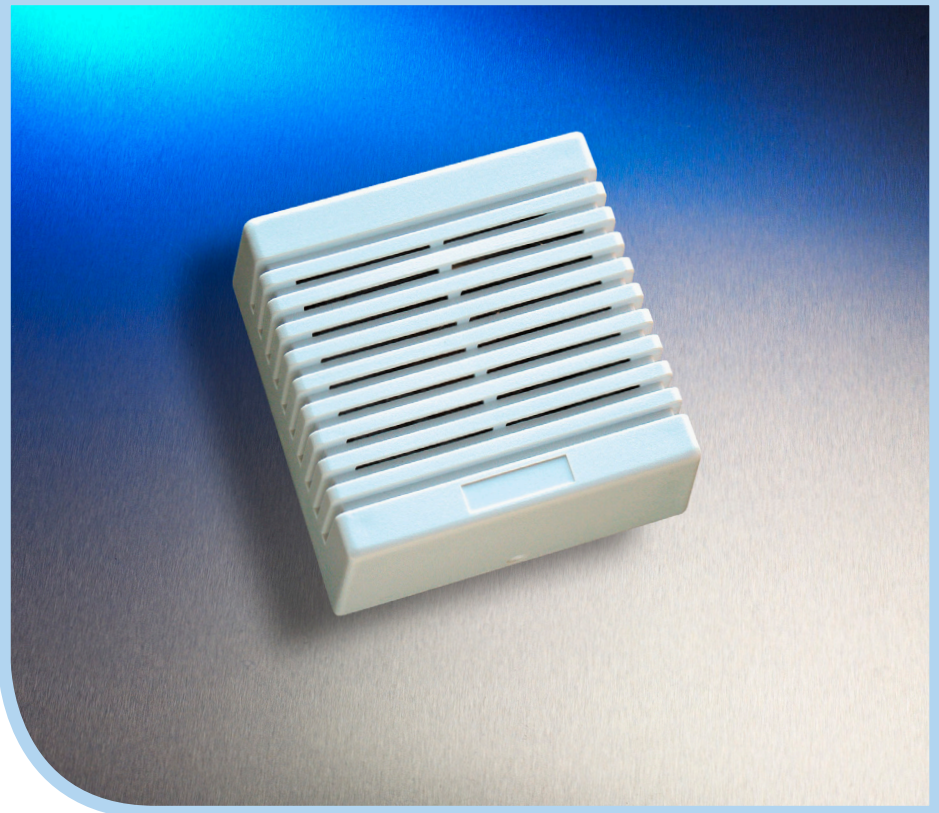
	Intruder	Access Control	CCTV	Fire	General
Extension Speakers	●				

Overview

A range of extension speakers for use in intruder alarm systems and retail security.

Features

- 8Ω and 16Ω units available
- 20W rating
- Tampered Enclosure (16T Model)
- Polycarbonate enclosure
- 3 year warranty



Description

Part Number	Dimensions
TS443-16T	110 H x 110 W x 55 D
TS443-16	
TS443-8	

